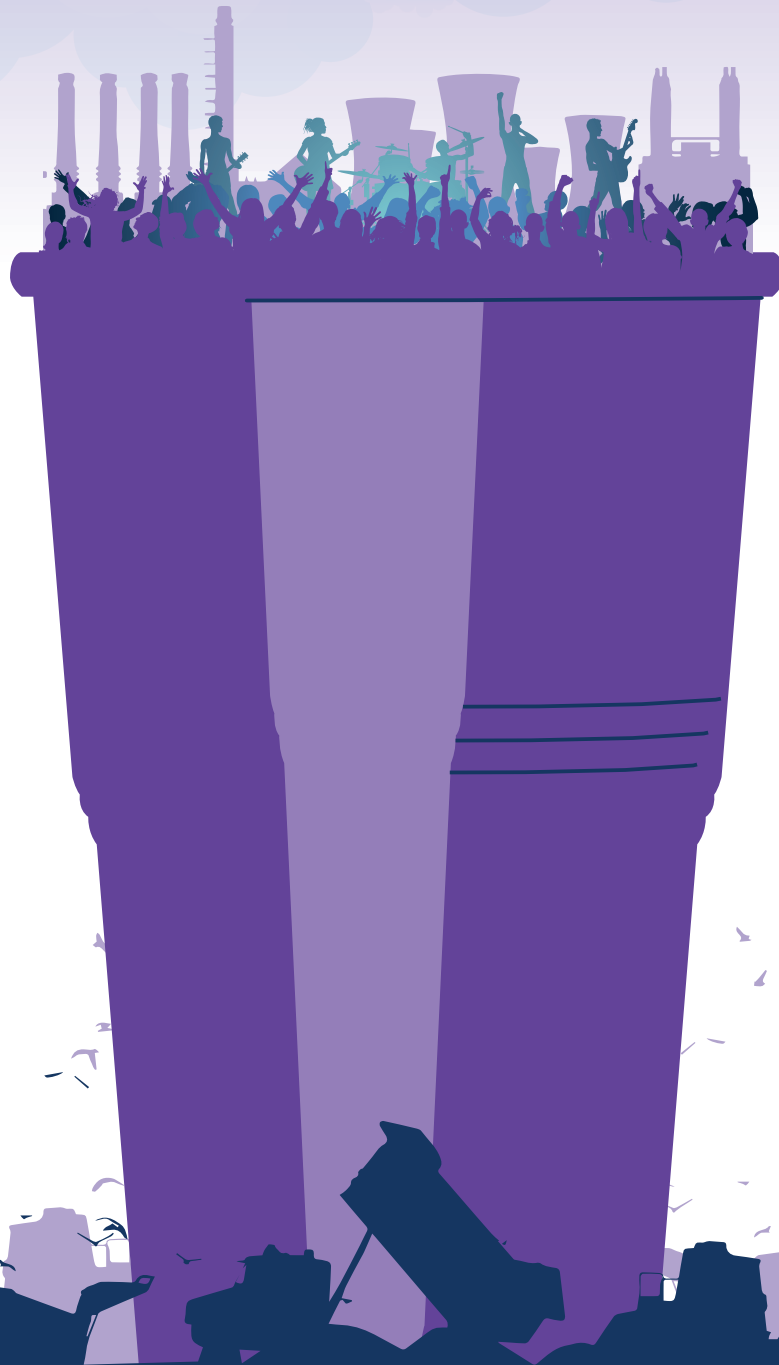


IT DOESN'T STACK UP...

How disposables
compare to reusables



hopesolutions



THE SIZE OF THE PROBLEM...

The UK festival and live event industry generates a huge volume of waste through the widespread use of disposable plastic and paper cups at events. This waste has a large impact on the environment...



The sheer volume of disposable items used has a massive environmental impact from manufacture and disposal

Every time a drink is served, at least 1 new cup must be manufactured

Due to the complexity of sorting disposable cups from mixed waste, most are disposed of to incineration with energy recovery, or to landfill

85 million attendees at live events in the UK each year

7,000+ outdoor events per annum



100+ million plastic cups every year

Plastic litter is everywhere - 1 in 6 fish in UK waters have ingested plastic

Landfill and incineration of plastic leaches pollutants into the environment.

More than 90% of the environmental impact of disposable cups is caused by manufacturing them and then only using them once.

8.3

billion tonnes of plastic produced in the last 60 years

500

years for plastic to degrade

8m

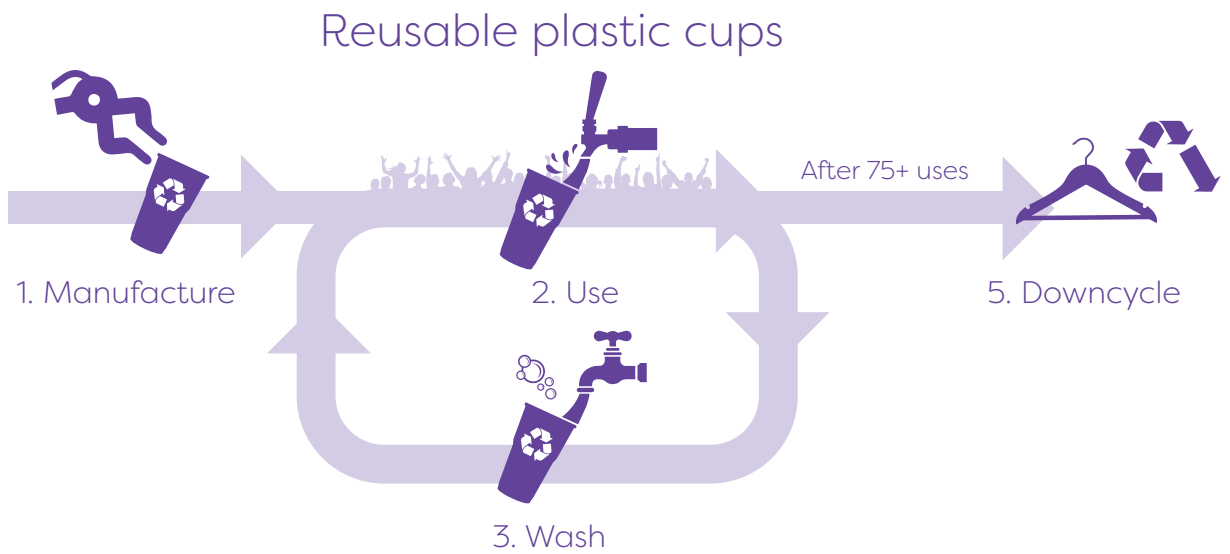
tonnes of plastic dumped in our oceans in 2017

< 9%

Have been recycled in the last 60 years





THE REUSE EFFECT...

Even when they are recycled, single use cups have a significantly higher environmental impact due to the cumulative impact of manufacturing.

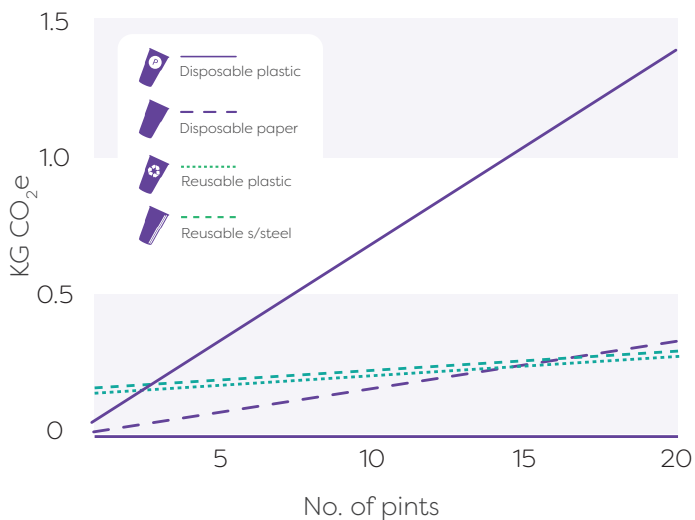


THE NUMBERS...

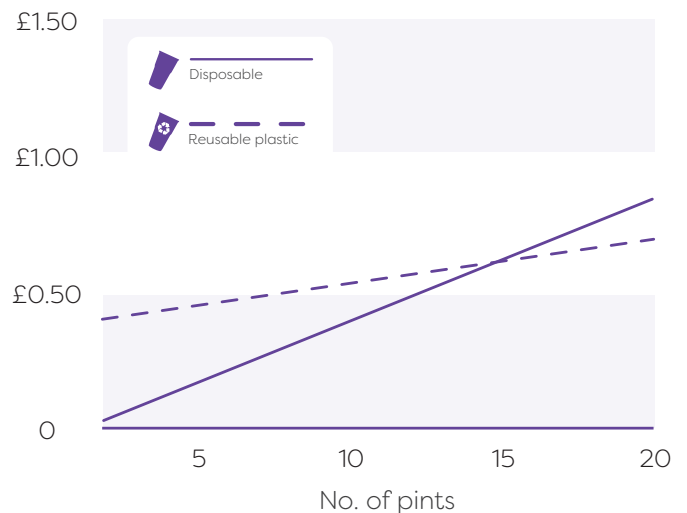
The figures stack up from both an environmental and cost perspective...

	 Disposable (Single Use) Paper Cups	 Disposable (Single Use) Plastic Cups	 Reusable plastic cups	 Reusable Stainless Steel Cup (Recycled Steel)
Uses recyclable materials	Sometimes	Sometimes	Yes	Yes
Recycled	0-34%	0-34%	100%	100%
To landfill or incineration	66%-100%	66%-100%	>0.1%	>0.01%
Reuseable	No	No	75+	Infinite
1 pint carbon footprint (CO ₂ e)	17.2g	70.0g	168.0g	178.6g
75 pint carbon footprint (CO ₂ e)	1,290.0g	5,250.0g	633.1g	642.3g
Raw material per cup (g)	11.8g	20g	48g	113g
Waste material per 75 uses (g)	885g	1,500g	0g	0g

Impact per no. uses;
Reusable vs disposable
Includes washing and transport



Cost per no. uses;
Reusable vs disposable
With in-house washing



THE SOLUTION...

Switching to reusable cups across the UK events industry would not only reduce manufacturing costs, but also the massive environmental impact of disposable cup use

Each year, for every 1 million reusable event cups in regular use:



Equivalent to the energy used by an average UK household for 75 years

1,000 tonnes

of carbon emissions would be avoided

300 tonnes

of waste would be saved

That's about the weight of 167 Transit Vans...

A reusable cup has a lower environmental impact than a single use cup after less than 3 uses

Sources:

An Introduction To The UK Event Industry In Numbers | <https://www.eventbrite.co.uk/blog/uk-event-industry-in-numbers-ds00/>
<https://resource.co/article/83-billion-tonnes-plastic-produced-1950-say-researchers-11997>
<https://plasticoceans.org/the-facts/>
<https://news.nationalgeographic.com/2017/07/plastic-produced-recycling-waste-ocean-trash-debris-environment/>
Bath Inventory of Carbon and Energy (ICE) | <http://www.ghgprotocol.org/Third-Party-Databases/Bath-ICE>
LCA Calculator | <http://www.lcacalculator.com/>
You Sustain - How much CO2 is that? | <http://www.yousustain.com/footprint/howmuchco2?co2=1000000KG>